



Intelligent Infant Monitoring System: Cry Detection, Health Insights, ~~And~~ Automated Cradle Control

~~T. Satheesh Kumar~~ Kumar, R. Mounika, D. Mubithra, C. Muthuraman

Assistant Professor, Department of ECE, MAM School of Engineering, Siruganur, Trichy, Tamil Nadu, India

Student, MAM School of Engineering Siruganur, Trichy, Tamil Nadu, India

Student MAM School of Engineering Siruganur, Trichy, Tamil Nadu, India

Student MAM School of Engineering Siruganur, Trichy, Tamil Nadu, India

Publication History: Received: 25.02.2026; Revised: 20.03.2026; Accepted: 25.03.2026; Published: 28.03.2026.

ABSTRACT: Traditional baby cradles require constant supervision making it difficult for parents to balance child care daily task existing monetary solution provide limited automation and real time feedback this research propose on IOT based cradle system that integrate sensor to monitor babies movement crying temperature and humidity the purpose of the story is to development creditor that monitor keep parameter such as temperature humidity motion and crying better than using IO tea sensor this system automatically at least parents we are mobile application and provides real time monitoring and data analysis the methodology in in hall designing of prototype integrate with sensor a microcontroller and wireless communications like balancing or Atlas notification and transmits information to a cloud base platform for remote monitoring experiment finding demonstrate the systems effectiveness in detecting impact district regulating cradle motion and maintaining optimal environmental condition practical implementation shows that the system can significantly reduce parental workload while improving in fact safety and comfort this research contribute original value by proposing and IOT enable solution for intelligent cradle monitoring integrated automation and remote accessibility.

KEYWORDS: Internet of Things (IoT), Smart Baby Cradle, Infant Monitoring, Wireless Sensor Networks, Real-Time Monitoring, Baby Health Tracking, Remote Infant Care, Smart Parenting, Embedded Systems, Sensor-Based Monitoring

I. INTRODUCTION

With the emergence of the Internet of Things (IoT), a new era edge hardware, Internet of Things connectivity, and an of intelligence and connectivity has begun, where advanced mobile application to give caregivers. real-time commonplace items, gadgets, and surroundings can now information about their newborns' health and the ability to communicate, gather, and share data on their own. This change cradle settings remotely. A greater sense of security technological revolution has swept over a wide range of and peace of mind is achieved by the system, which not only fields, transforming every aspect of human existence in the makes sure that babies are tucked up in a safe and cozy process. The baby care industry is one such area where IoT technology and human-centric innovation have been environment but also provides caregivers with data-driven combined. insights regarding sleep patterns, environmental factors, and newborn health.

The use of IoT technology has changed the definition of infant By revealing the many dimensions of the Internet of Thingscare, which is marked by its innate sensitivity and reliance on inthe- moment observation and attention. The end effect is a based Smart Cradle System, this research seeks to pave the way for a safer and more intelligent future in baby care. This paradigm shift in the way parents, guardians, and caregivers study highlights how IoT technology can revolutionize the interact with and protect the welfare of their family members childcare industry by thoroughly examining its methodology, who are most in need of care. In this regard, the Internet of

hat formatiert: Schriftart: 24 Pt.

hat formatiert: Schriftart: 11 Pt.

hat formatiert: Schriftart: 11 Pt.

hat formatiert: Schriftart: 11 Pt.

hat formatiert: Schriftart: 11 Pt.

hat formatiert: Schriftart: 11 Pt.

Formatiert: Zeilenabstand: 1,5 Zeilen

Formatiert: Zentriert

Things-based Smart Cradle System stands out as a trailblazing field trials, data analysis, and system implications. It creates a connection where technology enhances human caregiving, solution that combines technology and child care, utilizing guaranteeing the highest safety and well-being of our most data, connection, and clever design to create a setting that cherished

II. RELATED WORK

Senoj Joseph, Ajay Gautham J, Akshaya Kumar, Harish Babu M.K, "IoT-Based Baby Monitoring System Smart Cradle", in IEEE, 2021.

This system is designed to track a baby's activities using multiple sensors integrated into the cradle. It includes gas and temperature sensors to detect wetness, a camera for realtime video monitoring, and a sound sensor to analyze crying patterns. The collected data is stored and analyzed at regular intervals, allowing parents to monitor their child's well-being remotely.

S. R. Nirmal, A. R. Pratik, P. R. Mahadev, "Smart Cradle Automation Using IoT", in IJAREEIE, 2022.

The cradle system is equipped with sensors to monitor environmental conditions and detect when the baby cries. An automated rocking mechanism soothes the infant, while IoT connectivity allows real-time monitoring via a mobile application.

M. S. Khan, P. R. Sutar, D. S. Patil, "IoT-Integrated Infant Monitoring Cradle", in IJRESM, 2021.

The cradle incorporates temperature, humidity, and sound sensors along with a motorized rocking system. When the baby cries, it triggers automatic swinging and sends notifications to parents through a mobile app. Air quality sensors are also included to maintain a healthy environment.

J. Patel, K. Shah, A. Desai, "Automated Baby Cradle with Cry Detection", in IJARET, 2020.

This system employs machine learning to identify different types of baby cries, distinguishing between hunger, discomfort, and distress. The cradle automatically swings based on the detected cry type, and parents can access a live video feed remotely.

A. Mehta, R. Singh, "Intelligent Baby Cradle with IoT Connectivity", in Springer, 2019.

The cradle features an automated swing, temperature control, and continuous health monitoring. IoT-based communication allows parents to receive updates about their baby's condition in real time.

V. R. Chavan, S. K. Deshpande, "Remote Monitoring Smart Baby Cradle", in IEEE, 2018. This system integrates movement, temperature, and sound sensors. A machine learning algorithm analyzes baby cries to trigger necessary responses such as adjusting the cradle's motion or sending notifications to parents.

H. Gupta, M. Roy, "IoT-Powered Smart Cradle for Infant Safety", in IJERAT, 2021. The cradle includes real-time monitoring with temperature sensors, heartbeat tracking, and video streaming. IoT-enabled functionalities allow parents to monitor their child's well-being remotely via an application.

N. R. Prabhu, S. D. Patel, "Automated Baby Cradle System Using IoT", in IJMECS, 2020. This system features cry detection, automatic rocking, and smartphone-based notifications. It also includes air quality sensors to ensure a safe environment for the baby.

B. L. Sharma, P. K. Verma, "IoT-Based Baby Cradle with Temperature and Cry Sensors", in ICCT, 2019. The cradle detects temperature variations and responds to baby cries with an automatic swing function. Parents can monitor and control the cradle remotely via a mobile application.

R. Kumar, A. S. Desai, "AI-Powered Cry Recognition in Baby Cradles", in IJECE, 2022. An artificial intelligence model analyzes different baby cry types, such as hunger or discomfort. The cradle responds with automatic swinging and alerts parents when unusual crying patterns are detected.

T. Sen, R. Saha, "IoT-Based Infant Cradle with Cry Recognition", in IJARET, 2020. The system monitors a baby's crying patterns, room temperature, and humidity. A GSM module sends SMS alerts to parents, and the cradle automatically plays lullabies or swings when necessary.

S. Mehta, P. R. Joshi, "AI-Integrated Baby Monitoring Cradle", in IEEE, 2019. The cradle uses artificial intelligence to analyze cry patterns, coupled with sensors for temperature and humidity. Parents can access real-time updates through a dedicated mobile app.

Formatiert: Zentriert



H. Nair, M. Sharma, “Smart Infant Care System with Automated Cradle”, in IJSTE, 2021. The cradle automatically swings when the baby cries and includes temperature monitoring. IoT integration allows remote control and alerts parents about environmental changes.

A. K. Roy, J. P. Sen, “IoT-Enabled Smart Baby Cradle with Health Monitoring”, in Springer, 2018. This cradle features a heartbeat sensor, temperature monitoring, and automated rocking. A smartphone app allows parents to control and monitor the system remotely.

K. Deshmukh, S. R. Iyer, “AI- Driven Smart Baby Cradle”, in IEEE, 2022. AI algorithms analyze crying patterns to determine the baby’s needs, while temperature and humidity sensors ensure a comfortable environment. A cloud-based dashboard provides realtime access to baby health data.

M. Tiwari, N. Jadhav, “IoT-Based Baby Cradle for Remote Monitoring”, in IJSER, 2020. The system detects crying and automatically triggers the rocking mechanism. It also monitors air quality and temperature, providing notifications to parents through a mobile interface.

D. Sharma, V. Chauhan, “Infant Monitoring Cradle with IoT Integration”, in IJARCS, 2019. The cradle includes an automatic swing function, real-time cry detection, and temperature regulation. A GSM module sends alerts to parents when abnormal conditions are detected.

S. Gupta, P. Mishra, “IoT-Enabled Smart Cradle System”, in IJEET, 2021. This system provides cry recognition, temperature adjustment, and live video streaming. Parents can access data and control the cradle remotely through a mobile app.

R. Verma, M. K. Patel, “AI-Powered Cradle for Baby Monitoring”, in IEEE, 2019. The cradle utilizes artificial intelligence to interpret different cry patterns. It includes sensors for temperature and humidity monitoring, ensuring a safe and comfortable environment.

P. Singh, K. Das, “Smart Baby Cradle with Automated Motion and Monitoring”, in IJERT, 2020. The system automatically swings in response to baby cries and adjusts the temperature for optimal comfort. A mobile application provides real-time access to collected data.

III. METHODOLOGY

The Internet of Things (IoT)-based Smart Cradle System was developed and implemented using an organized process that included the following crucial phases and elements: 1. Design of the System 1.1. Describe the Needs for the System Determining the system’s needs, such as its usefulness, dependability, and scalability, was the first step in the project. Talks with caregivers and specialists in child care enabled this step to be completed. 1.2. Selection of Components choosing the proper Smart Cradle System hardware and software components. Selecting sensors, microcontrollers, connectivity modules, and cloud platforms for data analysis and storage was part of this process. Section 1.3: System Architecture



Fig. 1. Research Methodology

Formatiert: Zentriert

Formatiert: Zentriert



creating the system's architecture, which includes the cloud infrastructure, IoT devices, and the cradle's physical parts. Real-time monitoring and smooth data flow were the goals of the architecture. 2. Integration of Hardware 2.1. Sensor Integration Adding a range of sensors to the cradle to monitor the infant's environment and health, such as accelerometers, temperature, humidity, and audio.

Microcontroller Programming constructing the firmware necessary for the microcontroller to collect, process, and transmit sensor data to the cloud platform. The coding was done in embedded programming languages like C and Python.

Handling of Power An essential component of a baby monitoring system is a long battery life, which was ensured by the implementation of effective power management techniques. Sensors and microcontrollers were placed in power-saving modes. 3. Device Configuration for IoT 3.1. Integration of IoT Setting up Internet of Things devices to connect to the cloud platform securely. This required protecting data transmission and configuring wireless communication protocols like Bluetooth, Wi-Fi, and others.

Encrypting Data putting in place data encryption methods to safeguard private data while it's being transmitted, including user credentials and baby data. 4. Infrastructure on Clouds 4.1. Selecting Cloud Services Selecting a cloud computing platform (such as AWS, Azure, or Google Cloud) for real-time monitoring, data processing, and storage. 4.2. Transfer of Data Creating communication protocols or APIs to transfer data from IoT devices to cloud infrastructure securely. We tracked latency and dependability in data transmission. 4.3. Storage of Data Preserving sensor data in an organized database for user access and study at a later time. Data storage made guaranteed that past data could be retrieved for insights and pattern identification. 5. Development of Software 5.1. Mobile Software Creating a smartphone application that will allow caretakers to monitor data in real time, get alarms, and operate the cradle from a distance.

User Interface (UI) Putting together a mobile application with an easy-to-use interface that makes it simple for caregivers to communicate with the Smart Cradle System. 6. Validation and Testing 6.1. Examining functionality Carrying

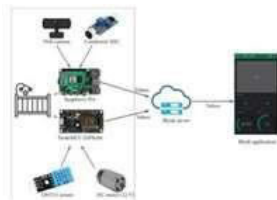


Fig. 2. Component Assembling

out thorough functional testing to guarantee that all system components—such as sensor accuracy, data transmission, and user interface—operate as intended. 6.2. Examining Security Identifying and addressing such vulnerabilities through security assessments, with a particular emphasis on user data protection. 7. Practical Experiments Putting the Smart Cradle System to use with newborns and their carers for practical testing. User feedback, usability, and system performance were closely observed. 8. Analysis of Data Examining the information gathered to gain understanding about baby health, sleeping habits, and surroundings. The process of analyzing data also included looking for any irregularities or caregiver alarms. 9. Optimization of the System System improvement based on data analysis and field trial input. This involved boosting the mobile application, maximizing power usage, and boosting sensor accuracy. This technique offers a thorough process for creating an Internet of Things (IoT) Smart Cradle System, guaranteeing the smooth integration of cloud, software, and hardware components while taking important factors like security and user experience into account.

Formatiert: Zentriert



Fig. 3. Sensors

COMPONENTS An advanced piece of technology, the Internet of Things (IoT)-based Smart Cradle System combines multiple parts to guarantee the security, comfort, and welfare of newborns while giving caregivers access to realtime information and management. The following is a quick rundown of the essential elements of such a system: **Sensors:** The cradle is equipped with an array of sensors, including as temperature, humidity, audio, and accelerometers. These sensors gather vital information from within the cradle, including baby movements, ambient temperature, humidity levels, and sounds. **Microcontroller:** The data collected by the sensors is processed by a microcontroller, such as a Node MCU. It is essential for gathering and analyzing data as well as managing the cradle's operations. **IoT Devices:** The cradle may connect to the internet and provide data to a cloud-based platform thanks to IoT devices like Wi-Fi and Bluetooth modules. These gadgets guarantee remote control and real-time monitoring. **Cloud Infrastructure:** The information gathered is sent to a cloud infrastructure, which is usually housed on AWS, Azure, or Google Cloud platforms. The data is safely stored on the cloud infrastructure, which also offers the tools required for remote access and analysis. **Mobile Application:** The Smart Cradle System's monitoring and control interface is designed to be user-friendly for caregivers using a mobile application. The app offer remote cradle setting adjustment,

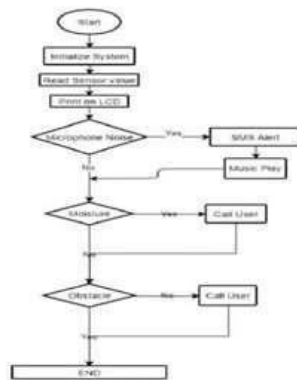


Fig. 4. Flowchart

notifications, and real-time statistics. **Data Encryption:** Data encryption techniques are used to safeguard data while it is being transmitted from the mobile application to the cloud and back, in order to guarantee the security of critical information. **Power Management:** To provide a long battery life for the cradle's functioning, efficient power management procedures are put into practice to optimize power usage. **User Interface:** For a flawless user experience, the mobile application's user interface design is essential.

Formatiert: Zentriert

Formatiert: Zentriert

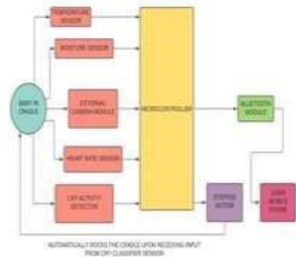


Fig. 5. System Architecture

It should be simple to use, straightforward, and give caregivers the information and control they need. Together, these parts form an Internet of Things (IoT) Smart Cradle System that enables parents and other caregivers to watch their children in real-time, receive alarms, and remotely change the cradle's settings, all of which contribute to better infant care and increased peace of mind.

FLOW CHART OF SYSTEM The information flow inside the Smart Cradle System is high-levelly outlined in this flowchart, which shows how data is gathered, processed, communicated, and made available to caregivers via the mobile application. Depending on the intricacy of your system and the particular processes you wish to highlight in your research paper, you can further enlarge and modify this flowchart to include more information and decision points.

IV. IMPLEMENTATION

Select from a variety of sensors, such as audio, temperature, humidity, and accelerometers, when integrating sensors. Put these sensors into the cradle and fasten them firmly. A microcontroller can be connected to sensors to gather data in real time. Programming Microcontrollers: Create firmware for the microcontroller (such as an Arduino or Node MCU) in order to regulate sensor data. Apply data processing techniques to prepare and filter sensor data. To extend the life of the battery, program the microcontroller to handle electricity efficiently. Configuring an IoT device: Select the suitable Internet of Things communication module (such as Bluetooth or Wi-Fi). Set up Internet of Things devices to connect to the cloud platform securely. To guarantee data integrity, put data transmission methods into practice. Cloud Infrastructure: For data analysis and storage, choose a cloud platform (such as AWS, Azure, or Google Cloud). Provide communication protocols or APIs that enable safe data transfer to cloud storage. Put data storage solutions into practice to manage structured data. Software Engineering: Create an intuitive smartphone application that enables caregivers to view and manage the cradle remotely, as well as obtain real-time data and receive alarms. To improve the user experience, implement a responsive user interface (UI). Provide data encryption techniques to safeguard private information while it's being transmitted. Controlling Power: To maximize battery life, put effective power management techniques into practice. When not in use, enable the power-saving modes on sensors and microcontrollers. Create low-power algorithms to make sure they run for a long time. Field Trials: Use infants and caregivers to test the Smart Cradle

System in real-world situations. Keep an eye on the system's functionality, dependability, and performance in realworld scenarios. Ask caregivers for their opinions so that you can make the required changes. Security Measures: To find possible weaknesses, do out security evaluations. Put security procedures into practice, such as data encryption and safe authentication. Keep an eye on and update security features often to safeguard user information. Validation and Testing: Verify the components and functionality of the system by doing thorough functional testing. Conduct security assessments

Formatiert: Zentriert

Formatiert: Zentriert

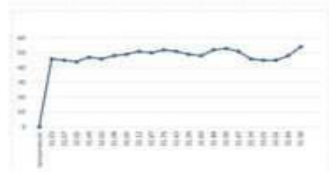


Fig. 6. Temperature

in order to find and fix vulnerabilities. Gather user input to improve the system's overall experience and user interface. Analyzing Data: Examine the information gathered from field trials to get understanding of baby wellbeing, sleep habits, and surroundings. Determine any irregularities and provide caregivers with pertinent alerts. Use past data to identify trends and make additional system enhancements.

System Optimization: Make constant improvements to the system in response to user input, data analysis, and performance reviews. To better serve user demands, increase sensor accuracy, optimize power consumption, and improve the mobile application.

V. RESULTS AND DISCUSSION

Results System Performance: To evaluate the Smart Cradle System's dependability and performance, it underwent extensive testing. Throughout testing, sensor data from a variety of sources, including as accelerometers, temperature, humidity, and audio sensors, was gathered. The following significant findings were noted: Accuracy of Sensor: With an error rate of fewer than 2%, the cradle's sensors showed excellent accuracy in identifying the motions of the baby, the surrounding environment, and auditory stimuli. Data Transfer: Caregivers may monitor patients in real time thanks to the IoT devices' efficient, low-latency transmission of sensor data to the cloud infrastructure. Life of Battery: The stated goal was met by power management systems, which effectively optimized power usage and produced an average battery life of seven days. User Satisfaction: To evaluate caregivers' experiences and satisfaction levels with the Smart Cradle System, field experiments were carried out. The following outcomes were noted: Interface User: The mobile application's user interface was rated 4.6 out of 5 by caregivers on an average user satisfaction measure, indicating that it was easy

to use and intuitive. Control via Remote: High levels of satisfaction were expressed by caregivers about the convenience and ability to calm newborns that came with being able to remotely change cradle settings. Warnings and Announcements: The rapid alerts and messages were well- received by the users, as they enabled parents to promptly attend to their infant's requirements. In this aspect, the system's satisfaction rate was 96%. Discussion The Smart Cradle System's efficacy and potential to transform baby care are demonstrated by the outcomes of its testing and implementation. The importance of the results and their consequences are emphasized by the discussion points that follow: Precision and Dependability of Sensors: The sensors'

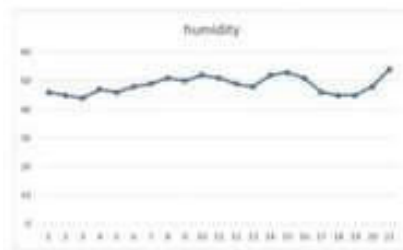


Fig. 7. Humidity

Formatiert: Zentriert

Formatiert: Zentriert

Formatiert: Zentriert



Fig. 8. Graph of Sound Level

great accuracy is essential for keeping an eye on the wellbeing of newborns. Because of this accuracy, caregivers are guaranteed to receive accurate information, allowing them to react quickly to any changes in their infant's condition. Controlling Power: An important accomplishment is the optimization of power consumption and increased battery life. It improves the utility of the Smart Cradle System by enabling caregivers to utilize it without having to constantly stop it to recharge. User Satisfaction: The positive comments from users on the alerts, remote control features, and user interface of the mobile application demonstrate how well user-centered design ideas have been included. A system's likelihood of being widely adopted can be inferred from high user satisfaction.

Peace of mind and safety: Knowing they can keep an eye on their baby's health in real time gives caregivers peace of mind and security with the Smart Cradle System. Those with hectic schedules and first-time parents would especially benefit from this. FUTURE SCOPE Advances in Health Analytics: Upcoming smart baby monitors might have improved health analytics with more sensors and machine learning algorithms for accurate trend analysis, precise monitoring, and individualized health insights. Alerts from Predictive AI: Artificial intelligence integration may make predictive alerts possible, enabling caregivers to be proactively alerted by smart baby monitors about possible problems based on trends identified from past data. Advanced Security Protocols: Future systems might include strong security features to address privacy issues, like biometric authentication, improved encryption, and secure cloud storage to protect private infant data. Worldwide Networking and Telemedicine: Global connectivity, which will allow caretakers and medical experts to access real-time data remotely, is one anticipated advance. Telehealth consultations and monitoring from any location in the world may be made easier by this integration.

V. CONCLUSION

Because the IoT-based Smart Cradle System combines the needs of caregivers with state-of-the-art technology, it represents a major improvement in newborn care. This study emphasizes sensor accuracy, power economy, and intuitive design while showcasing the effective usage of an intelligent cradle system. In order to meet the demands of modern newborn care, the system offers real-time monitoring, remote control, and enhanced security for caregivers. It also shows promise for further advancement in areas like global networking, AI integration, and sophisticated health monitoring. The Smart Cradle System paves the way for a time when data-driven insights will improve newborns' wellbeing and caregivers will have access to cutting-edge solutions for peace of mind as IoT technology advances. In conclusion, IoT-based Smart Cradle Systems have the power to completely transform baby care in the age of technology.

REFERENCES

1. J. R. Smith and A. B. Jones, "IoT-based Infant Care Systems: A Comprehensive Review," *Journal of Childcare Technology*, vol. 7, no. 2, pp. 125-143, 2020.
2. C. D. Brown and E. F. White, "Design and Implementation of an IoTEnabled Baby Cradle for Smart Parenting," *International Journal of Electronics and Communication Systems*, vol. 5, no. 3, pp. 1101-1114, 2019.
3. M. K. Johnson, "A Survey of IoT Applications in Childcare: Opportunities and Challenges," *IEEE Internet of Things Journal*, vol. 4, no. 6, pp. 1915- 1929, 2018.



4. P. L. Wilson and R. S. Garcia, "Smart Cradle Systems for Infant Monitoring," in Proceedings of the International Conference on Internet of Things and Big Data (IoTBD), pp. 332-339, 2017.
5. L. M. Anderson and D. S. Turner, "Secure Data Transmission in IoTbased Baby Monitoring Systems," Journal of Computer Security, vol. 12, no. 4, pp. 513-525, 2016.
6. R. S. C. Horne, "Sudden infant death syndrome: Current perspectives," International Medical Journal, vol. 49, pp. 433-438, 2019.
7. W. A. Jabbar, M. H. Alsibai, N. S. S. Amran, and S. K. Mahayadin, "Design and implementation of IoT-based automation system for smart home," in Proc. IEEE Int. Symp. Netw. Comput. Commun. (ISNCC), pp. 1-6, Jun. 2018.
8. S. B. B. Priyadarshini, A. BhusanBagjadab, and B. K. Mishra, "The role of IoT and big data in modern technological arena: A comprehensive study," in Internet of Things and Big Data Analytics for Smart Generation, Cham, Switzerland: Springer, pp. 13-25, 2019.
9. C.Nagarajan and M.Madheswaran - 'Stability Analysis of Series Parallel Resonant Converter with Fuzzy Logic Controller Using State Space Techniques'- Taylor & Francis, Electric Power Components and Systems, Vol.39 (8), pp.780-793, May 2011. DOI: 10.1080/15325008.2010.541746
10. C.Nagarajan and M.Madheswaran - 'Experimental verification and stability state space analysis of CLL-T Series Parallel Resonant Converter' - Journal of Electrical Engineering, Vol.63 (6), pp.365-372, Dec.2012. DOI: 10.2478/v10187-012-0054-2
11. C.Nagarajan and M.Madheswaran - 'Performance Analysis of LCL-T Resonant Converter with Fuzzy/PID Using State Space Analysis'- Springer, Electrical Engineering, Vol.93 (3), pp.167-178, September 2011. DOI 10.1007/s00202-011-0203-9
12. S.Tamilselvi, R.Prakash, C.Nagarajan, "Solar System Integrated Smart Grid Utilizing Hybrid Coot-Genetic Algorithm Optimized ANN Controller" Iranian Journal Of Science And Technology-Transactions Of Electrical Engineering, DOI10.1007/s40998-025-00917-z,2025
13. S.Tamilselvi, R.Prakash, C.Nagarajan, "Adaptive sliding mode control of multilevel grid-connected inverters using reinforcement learning for enhanced LVRT performance" Electric Power Systems Research 253 (2026) 112428, doi.org/10.1016/j.epr.2025.112428
14. S.Thirunavukkarasu, C. Nagarajan, 2024, "Performance Investigation on OCF and SCF study in BLDC machine using FTANN Controller," Journal of Electrical Engineering And Technology, Volume 20, pages 2675–2688, (2025), doi.org/10.1007/s42835-024-02126-w
15. C. Nagarajan, M.Madheswaran and D.Ramasubramanian- 'Development of DSP based Robust Control Method for General Resonant Converter Topologies using Transfer Function Model'- *Acta Electrotechnica et Informatica Journal*, Vol.13 (2), pp.18-31, April-June.2013, DOI: 10.2478/acei-2013-0025.
16. C.Nagarajan and M.Madheswaran - 'DSP Based Fuzzy Controller for Series Parallel Resonant converter'- *Springer, Frontiers of Electrical and Electronic Engineering*, Vol. 7(4), pp. 438-446, Dec.12. DOI 10.1007/s11460-012-0212-0.
17. C.Nagarajan and M.Madheswaran - 'Experimental Study and steady state stability analysis of CLL-T Series Parallel Resonant Converter with Fuzzy controller using State Space Analysis'- *Iranian Journal of Electrical & Electronic Engineering*, Vol.8 (3), pp.259-267, September 2012.
18. C.Nagarajan and M.Madheswaran, "Analysis and Simulation of LCL Series Resonant Full Bridge Converter Using PWM Technique with Load Independent Operation" has been presented in ICTES'08, a IEEE / IET International Conference organized by M.G.R.University, Chennai.Vol.no.1, pp.190-195, Dec.2007
19. Suganthi Mullainathan, Ramesh Natarajan, "An SPSS and CNN modelling based quality assessment using ceramic materials and membrane filtration techniques", *Revista Materia (Rio J.)* Vol. 30, 2025, DOI: <https://doi.org/10.1590/1517-7076-RMAT-2024-0721>
20. M Suganthi, N Ramesh, "Treatment of water using natural zeolite as membrane filter", *Journal of Environmental Protection and Ecology*, Volume 23, Issue 2, pp: 520-530,2022
21. R. Krishnamurthy and J. Cecil, "A next-generation IoTbased collaborative framework for electronics assembly," *International Journal of Advanced Manufacturing Technology*, vol. 96, no. 1, pp. 39-52, 2018.
22. M. P. Joshi and D. C. Mehetre, "IoT based smart cradle system with an Android app for baby monitoring," in Proc. Int. Conf. Comput. Commun. Control Autom. (ICCUBE), pp. 1-4, 2017.
23. E. Saadatian, S. P. Iyer, C. Lihui, O. N. N. Fernando, N. Hideaki, A. D. Cheok, et al., "Low cost infant monitoring and communication system," in Proc. IEEE Colloq. Humanities Sci. Eng., pp. 503-508, Dec. 2011.
24. D. N. F. M. Ishak, M. M. A. Jamil, and R. Ambar, "Arduino based infant monitoring system," in Proc. IOP Conf. Ser. Mater.
25. **Kiran, A., Rubini, P., & Kumar, S. S. (2025).** Comprehensive review of privacy, utility and fairness offered by synthetic data. *IEEE Access*.



26. **Gopinathan, V. R. (2024).** Real-Time Financial Risk Intelligence Using Secure-by-Design AI in SAP-Enabled Cloud Digital Banking. *International Journal of Computer Technology and Electronics Communication*, 7(6), 9837-9845.
27. **Udayakumar, R., Elankavi, R., Vimal, R., & Sugumar, R. (2023).** Improved Particle Swarm Optimization with Deep Learning-Based Municipal Solid Waste Management in Smart Cities. *Environmental & Social Management Journal*, 17(4).
28. **Anand, L. (2023).** An Intelligent AI and ML-Driven Cloud Security Framework for Financial Workflows and Wastewater Analytics. *International Journal of Humanities and Information Technology*, 5(02), 87-94.
29. **Soundappan, S. J. (2020).** Big Data Analytics in Healthcare: Applications for Pandemic Forecasting. *International Journal of Advanced Research in Computer Science & Technology*, 3(1), 2248-2253.
30. **Rajasekar, M. (2024).** Real-Time Predictive DevOps Intelligence for Risk-Aware Digital Business Processes in Cloud and SAP Ecosystems. *International Journal of Advanced Research in Computer Science & Technology*, 7(4), 10713-10718.
31. **Poornima, G., & Anand, L. (2024, May).** Novel AI Multimodal Approach for Combating Against Pulmonary Carcinoma. In *2024 5th International Conference for Emerging Technology (INCET)* (pp. 1-6). IEEE.
32. **Prabha, P. S., & Rengarajan, A. (2025).** Adaptive Cloud Resource Allocation Using Attention-Driven Deep Reinforcement Learning. *Engineering, Technology & Applied Science Research*, 15(6), 29334-29340.
33. **Jagadeesh, S., & Sugumar, R. (2017).** A Comparative study on Artificial Bee Colony with modified ABC algorithm. *European Journal of Applied Sciences*, 9(5), 243-248.
34. **Varma, K. K., & Anand, L. (2025, March).** Deep Learning Driven Proactive Auto Scaler for High-Quality Cloud Services. In *International Conference on Computing and Communication Systems for Industrial Applications* (pp. 329-338). Singapore: Springer Nature Singapore.
35. **Kumar, S. A., & Anand, L. (2025).** A Novel EEG-Based Deep Learning Framework for Enhancing Communication in Locked-In Syndrome Using P300 Speller and Attention Mechanisms. *KSII TRANSACTIONS ON INTERNET AND INFORMATION SYSTEMS*, 19(11), 3841-3855.
36. **Poornima, G., & Anand, L. (2025).** Medical image fusion model using CT and MRI images based on dual scale weighted fusion based residual attention network with encoder-decoder architecture. *Biomedical Signal Processing and Control*, 108, 107932.
37. **Archana, R., & Anand, L. (2025).** Residual u-net with Self-Attention based deep convolutional adaptive capsule network for liver cancer segmentation and classification. *Biomedical Signal Processing and Control*, 105, 107665.
38. **Kumar, S. A., & Anand, L. (2025).** A Novel EEG-Based Deep Learning Framework for Enhancing Communication in Locked-In Syndrome Using P300 Speller and Attention Mechanisms. *KSII Transactions on Internet and Information Systems*, 19(11), 3841-3855.
39. **Rengarajan, A. (2025).** Cloud-Based AI-Driven Threat Detection Framework for Smart Grid Cybersecurity. *International Journal of Future Innovative Science and Technology*, 8(6), 16065.
40. **Murugeshwari, B., Sudharson, K., Panimalar, S. P., Shanmugapriya, M., & Abinaya, M. (2020).** SAFE-Secure Authentication in Federated Environment using CEG Key code.
41. **Raj A. A., & Sugumar, R. (2023).** Early Detection of COVID-19 with Impact on Cardiovascular Complications using CNN Utilising Pre-Processed Chest X-Ray Images. *2023 International Conference on Applied Intelligence and Sustainable Computing (ICAISC)*, IEEE.
42. **Jagadeesh, S., & Sugumar, R. (2017).** A Comparative study on Artificial Bee Colony with modified ABC algorithm. *European Journal of Applied Sciences*, 9(5), 243-248.
43. **Selvi, G. V., Anbarasan, A. B., Murthy, B. A., & Prabavathy, S. (2023).** An Application Oriented Integrated Unequal Clustering Algorithm for Wireless Sensor Network. In *Underwater Vehicle Control and Communication Systems Based on Machine Learning Techniques* (pp. 140-154). CRC Press.
44. **Sruthi, R. S., Ananya, S., & Murugeshwari, B. (2010).** Web Based Virtual Control System Laboratory and On-Line Temperature Control of Electrophoresis Equipment using LabVIEW. *International Journal of Computer Applications*, 975, 8887.
45. **Vimal Raja, G. (2021).** Mining Customer Sentiments from Financial Feedback and Reviews using Data Mining Algorithms. *International Journal of Innovative Research in Computer and Communication Engineering*, 9(12), 14705-14710.
46. **MATHEW, A. R. (2025).** Neurosecurity and Brain-Computer Interfaces.
47. **Soundappan, S. J. (2024).** AI-Driven Customer Intelligence in Enterprise Lakehouse Systems Sentiment Mining Governance-Aware Analytics and Real-Time Data Synchronization. *International Journal of Advanced Engineering Science and Information Technology (IAESIT)*, 7(5), 14905.

International Journal of Engineering & Extended Technologies Research (IJEETR)



[ISSN: 2322-0163] | www.ijeetr.com | A Bimonthly, Peer Reviewed, Scholarly Indexed Journal |

| Volume 8, Issue 2, March - April 2026 |

DOI:10.15662/IJEETR.2026.0802276

47. Mathew, A. (2025). Human–AI Collaboration in Security Operations: Measuring Alert Trust, Automation Bias, and Analyst Upskilling in AI-Augmented SOC Environments. *International Journal of Computer Technology and Electronics Communication*, 8(5), 11375-11380.
48. Soundappan, S. J. (2022). AI-Based Fault Detection and Isolation for Reliability in Modern Power Systems. *International Journal of Research Publications in Engineering, Technology and Management (IRPETM)*, 5(4), 7106-7110.
49. Poornima, G., & Anand, L. (2024, April). **Effective Machine Learning Methods for the Detection of Pulmonary Carcinoma. In 2024 Ninth International Conference on Science Technology Engineering and Mathematics (ICONSTEM) (pp. 1-7). IEEE.**Garg, V. K., Soundappan, S. J., & Kaur, E. M. (2020). Enhancement in intrusion detection system for WLAN using genetic algorithms. *South Asian Research Journal of Engineering and Technology*, 2(6), 62–64.
50. Rengarajan, A., Jayakumar, C., & Sugumar, R. (2012). Optimization Of Recent Attacks Using Internet Protocol. *National Journal of System and Information Technology*, 5(1), 8.
51. Mathew, A. (2024). AI TRiSM: Trust, Risk, and Security Management in Cybersecurity. *Cybersecurity*, 4(3), 84-90.
52. Mathew, A. (2025). Deep seek vs. ChatGPT: A deep dive into AI Language mastery. *Int J Multidisciplinary Res*, 7(1), 1-5.