



CARENEXUS: Bridging Insights and Care for Better Clinical Outcomes

Mrs. Amsaveni, M.Tech, Monika S, Priyanga V S , Charulatha D V, Joycee K S

Assistant Professor, Department of Artificial Intelligence and Data Science, Er. Perumal Manimekalai College of Engineering, Hosur, Anna University, Krishnagiri, India

Student, Department of Artificial Intelligence and Data Science, Er. Perumal Manimekalai College of Engineering, Hosur, Anna University, Krishnagiri, India

Student, Department of Artificial Intelligence & Data Science, Er. Perumal Manimekalai College of Engineering, Hosur, Anna University, Krishnagiri, India

Student, Department of Artificial Intelligence & Data Science, Er. Perumal Manimekalai College of Engineering, Hosur, Anna University, Krishnagiri, India

Student, Department of Artificial Intelligence & Data Science, Er. Perumal Manimekalai College of Engineering, Hosur, Anna University, Krishnagiri, India

Publication History: Received: 25.02.2026; Revised: 20.03.2026; Accepted: 25.03.2026; Published: 28.03.2026.

ABSTRACT: In recent years, the rapid growth of healthcare data has created both opportunities and challenges for medical professionals. Doctors are often required to make quick and accurate decisions based on large volumes of patient information, which can lead to increased workload and potential diagnostic errors. This paper presents CareNexus, an AI-powered Clinical Decision Support System designed to assist healthcare professionals in improving diagnostic accuracy and treatment planning.

The system integrates machine learning techniques to analyze patient data, identify patterns, and provide predictive insights. It offers features such as disease prediction, risk assessment, and personalized recommendations. By supporting doctors with data-driven insights, CareNexus aims to enhance clinical efficiency, reduce errors, and improve patient outcomes. The proposed system demonstrates how artificial intelligence can act as a supportive tool rather than a replacement for medical experts.

KEYWORDS: Clinical Decision Support System, Artificial Intelligence, Healthcare Analytics, Disease Prediction, Risk Assessment, Machine Learning

I. INTRODUCTION

The healthcare sector is experiencing a rapid transformation driven by the increasing adoption of digital technologies and data-centric approaches. With the widespread use of electronic health records, diagnostic tools, and monitoring devices, a massive volume of patient data is being generated on a daily basis. This data includes clinical history, laboratory results, imaging reports, and real-time health indicators. While such data holds immense potential to improve medical outcomes, its effective utilization remains a significant challenge for healthcare professionals.

In a typical clinical environment, doctors are required to analyze complex and diverse datasets within limited time frames. The growing patient-to-doctor ratio further intensifies this challenge, often leading to increased workload, fatigue, and the possibility of human error. Identifying subtle patterns or correlations in patient data—especially those that are not immediately visible—can be difficult even for experienced practitioners. As a result, there is a pressing need for intelligent systems that can assist in processing large volumes of information and support clinical decision-making.

In recent years, advancements in **Artificial Intelligence** and **Machine Learning** have opened new possibilities in the healthcare domain. These technologies enable systems to learn from historical data, identify patterns, and make



predictions with a high degree of accuracy. Their application in healthcare has shown promising results in areas such as disease prediction, medical imaging analysis, and personalized treatment recommendations. However, many existing solutions are either limited in scope or not fully integrated into the clinical workflow.

A **Clinical Decision Support System (CDSS)** is designed to provide healthcare professionals with knowledge and patient-specific information, intelligently filtered and presented at appropriate times, to enhance patient care. Traditional CDSS tools primarily focus on rule-based approaches and static guidelines. While useful, these systems often lack adaptability and may not effectively handle complex, dynamic datasets.

To address these limitations, this paper introduces CareNexus, an AI-powered Clinical Decision Support System that leverages advanced machine learning techniques to provide real-time insights for doctors. The system is designed with a strong emphasis on usability and integration into existing clinical practices. CareNexus assists doctors by analyzing patient symptoms, medical history, and diagnostic data to generate possible diagnoses, predict potential risks, and recommend further tests or preventive measures.

Unlike fully automated systems, CareNexus adopts a collaborative approach, where artificial intelligence acts as a supportive tool rather than a replacement for medical professionals. The final decision-making authority remains with the doctor, ensuring that clinical expertise and ethical considerations are always prioritized. This human-in-the-loop design enhances trust, reliability, and practical applicability in real-world healthcare settings.

Furthermore, the system aims to improve not only diagnostic accuracy but also efficiency. By reducing the time required to analyze patient data and highlighting critical insights, CareNexus enables doctors to focus more on patient care and less on manual data processing. This can lead to better healthcare delivery, early detection of diseases, and improved patient outcomes.

In summary, the integration of AI into clinical workflows through systems like CareNexus represents a significant advancement in modern healthcare. It addresses key challenges faced by medical professionals and demonstrates how technology can be effectively used to support and enhance human decision-making.

II. PROBLEM STATEMENT

In modern healthcare, doctors must analyze large volumes of patient data within limited time, which increases workload and the risk of missing critical insights. Existing systems mainly store data and lack intelligent analysis capabilities. Even traditional Clinical Decision Support System tools are often rule-based and not adaptive. Hence, there is a need for an advanced system that can analyze patient data and provide accurate, real-time decision support to improve clinical outcomes..

III. EXISTING SYSTEM

The current healthcare systems primarily focus on storing and managing patient data through electronic records and basic hospital management software. While these systems help in organizing medical information, they offer limited support in clinical decision-making. Most existing solutions rely on traditional Clinical Decision Support System approaches, which are largely rule-based and depend on predefined guidelines.

These systems lack the ability to analyze complex patient data dynamically or adapt to new patterns. They do not effectively utilize advanced techniques like Machine Learning, resulting in limited predictive capabilities. As a result, doctors still need to manually interpret data, which can be time-consuming and may lead to errors or missed insights. Overall, existing systems provide support for data management but fall short in delivering intelligent, real-time decision assistance.

IV. PROPOSED SYSTEM

CareNexus is an intelligent clinical decision support system that leverages artificial intelligence to assist doctors in diagnosing diseases and predicting patient risks.

The system collects patient data such as symptoms, medical history, and diagnostic reports. It then processes this data using machine learning algorithms to identify possible conditions and predict future health risks.



Unlike traditional systems, CareNexus emphasizes collaboration between human expertise and machine intelligence. Doctors remain in control of the final decision, while the system provides suggestions and insights to support them.

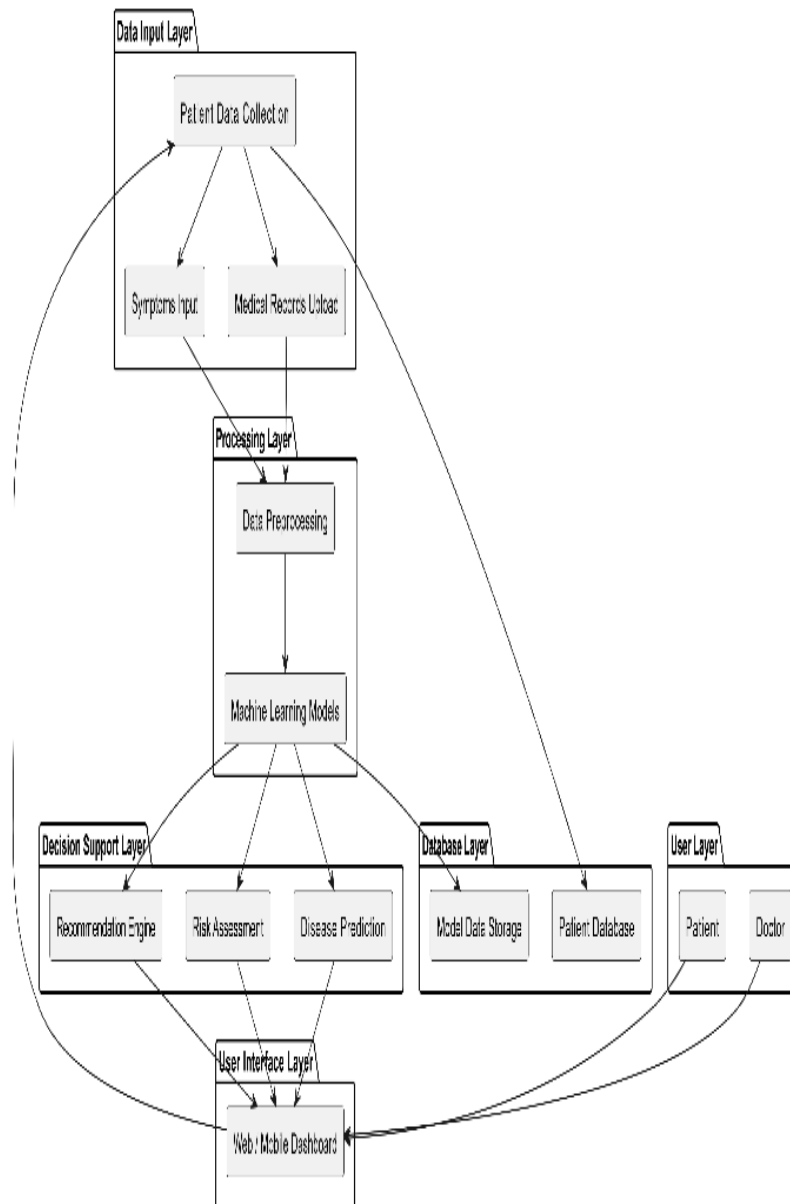
V. SYSTEM ARCHITECTURE

The architecture of CareNexus consists of the following components:

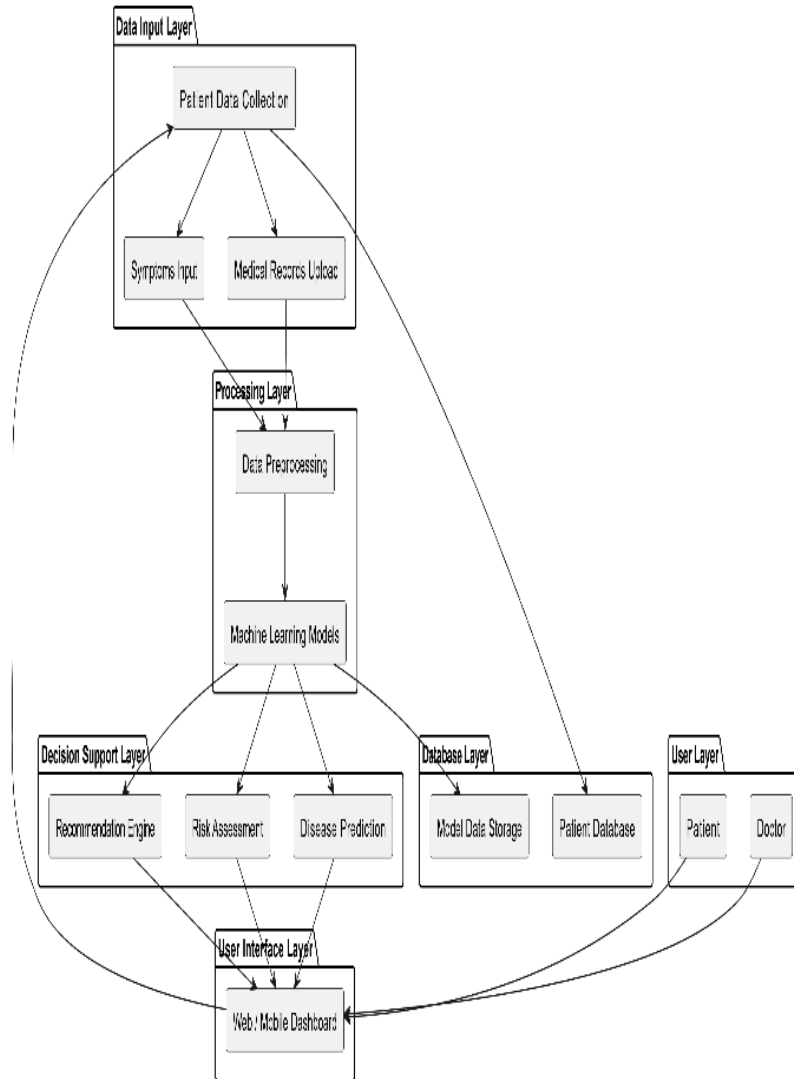
- **Data Input Layer:** Collects patient information including symptoms and medical records
- **Processing Layer:** Uses machine learning models to analyze data
- **Decision Support Layer:** Generates predictions and recommendations
- **User Interface Layer:** Provides an interactive dashboard for doctors and patients

The system ensures seamless interaction between these components, enabling efficient data flow and real-time analysis.

CareNexus System Architecture



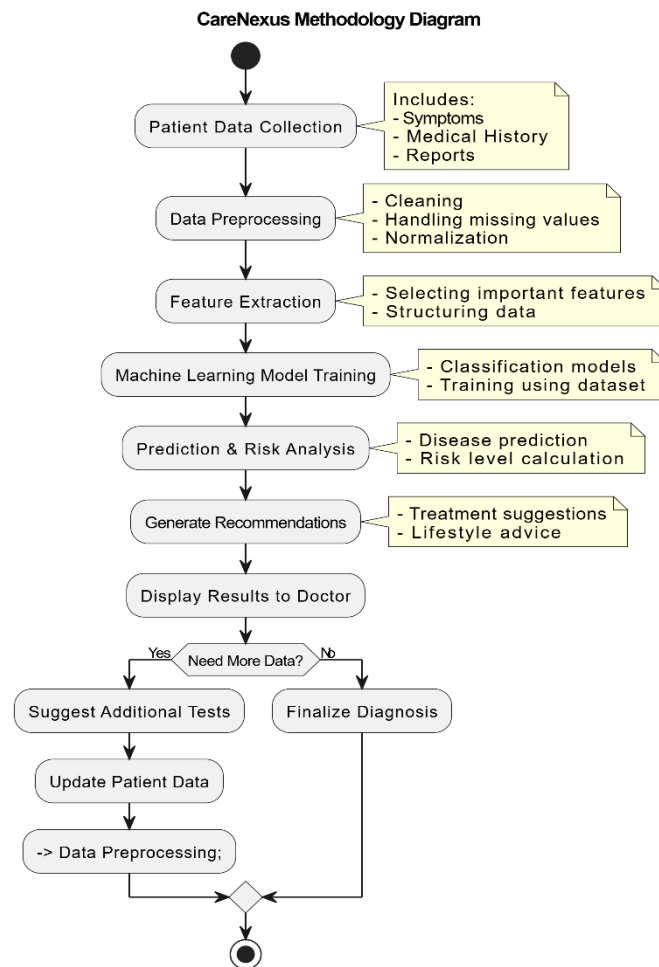
CareNexus System Architecture



VI. METHODOLOGY

- The working of the system involves several steps:
- Data collection from patients
- Data preprocessing and cleaning
- Feature extraction and selection
- Model training using machine learning algorithms
- Prediction and risk analysis
- Display of results to the doctor

Machine learning models such as classification algorithms are used to predict diseases, while regression techniques are applied to calculate health scores. Natural language processing techniques can also be incorporated to analyze symptom descriptions.



VII. RESULTS AND DISCUSSION

The implementation of CareNexus demonstrates the practical effectiveness of integrating intelligent techniques from Artificial Intelligence and Machine Learning into a clinical support environment. The system was tested using sample patient datasets containing symptoms, medical history, and diagnostic inputs. The results show that CareNexus is capable of processing patient data efficiently and generating meaningful insights within a short time.

The disease prediction module was able to identify probable conditions based on input symptoms with a satisfactory level of accuracy, while the risk assessment component successfully highlighted potential future health issues. Additionally, the recommendation module provided relevant suggestions such as lifestyle changes, precautionary measures, and the need for further diagnostic tests when required. These outputs support doctors in making informed decisions rather than relying solely on manual analysis.

From a performance perspective, the system reduces the time required for data interpretation and helps in prioritizing critical cases. The structured presentation of results through an interactive dashboard improves usability and ensures that doctors can quickly understand patient conditions. This contributes to better clinical efficiency and enhances the overall quality of healthcare delivery.

However, the effectiveness of the system largely depends on the quality and completeness of input data. In cases where patient data is insufficient or inconsistent, the predictions may not be fully reliable. Furthermore, while the system provides valuable insights, it does not replace professional medical judgment. Instead, it serves as a supportive tool that enhances decision-making.



In summary, the results indicate that CareNexus improves diagnostic support, reduces workload, and enables early detection of potential risks. The discussion highlights that combining human expertise with intelligent systems leads to more accurate, efficient, and reliable healthcare outcomes.

VIII. CONCLUSION

CareNexus is an AI-based system that supports doctors in analyzing patient data and making better clinical decisions. By using techniques from Artificial Intelligence and Machine Learning, it improves diagnosis accuracy, reduces workload, and enables faster decision-making. The system acts as a supportive tool, ensuring that doctors remain in control while benefiting from data-driven insights, ultimately leading to improved patient care and outcomes.

REFERENCES

- 1) Shortliffe, E. H., & Cimino, J. J., *Biomedical Informatics: Computer Applications in Health Care and Biomedicine*, Springer, 2014.
- 2) Samek, W., Montavon, G., Vedaldi, A., Hansen, L. K., & Müller, K.-R.
- 3) *Explainable Artificial Intelligence in Clinical Decision Support Systems (2025)*
- 4) Sutton, R. T., Pincock, D., Baumgart, D. C., Sadowski, D. C., Fedorak, R. N., & Kroeker, K. I.
- 5) C.Nagarajan and M.Madheswaran - 'Stability Analysis of Series Parallel Resonant Converter with Fuzzy Logic Controller Using State Space Techniques'- Taylor & Francis, *Electric Power Components and Systems*, Vol.39 (8), pp.780-793, May 2011. DOI: 10.1080/15325008.2010.541746
- 6) C.Nagarajan and M.Madheswaran - 'Experimental verification and stability state space analysis of CLL-T Series Parallel Resonant Converter' - *Journal of Electrical Engineering*, Vol.63 (6), pp.365-372, Dec.2012. DOI: 10.2478/v10187-012-0054-2
- 7) C.Nagarajan and M.Madheswaran - 'Performance Analysis of LCL-T Resonant Converter with Fuzzy/PID Using State Space Analysis'- Springer, *Electrical Engineering*, Vol.93 (3), pp.167-178, September 2011. DOI 10.1007/s00202-011-0203-9
- 8) S.Tamilselvi, R.Prakash, C.Nagarajan, "Solar System Integrated Smart Grid Utilizing Hybrid Coot-Genetic Algorithm Optimized ANN Controller" *Iranian Journal Of Science And Technology-Transactions Of Electrical Engineering*, DOI10.1007/s40998-025-00917-z,2025
- 9) S.Tamilselvi, R.Prakash, C.Nagarajan, " Adaptive sliding mode control of multilevel grid-connected inverters using reinforcement learning for enhanced LVRT performance" *Electric Power Systems Research* 253 (2026) 112428, doi.org/10.1016/j.epr.2025.112428
- 10) S.Thirunavukkarasu, C. Nagarajan, 2024, "Performance Investigation on OCF and SCF study in BLDC machine using FTANN Controller," *Journal of Electrical Engineering And Technology*, Volume 20, pages 2675–2688, (2025), doi.org/10.1007/s42835-024-02126-w
- 11) C. Nagarajan, M.Madheswaran and D.Ramasubramanian- 'Development of DSP based Robust Control Method for General Resonant Converter Topologies using Transfer Function Model'- *Acta Electrotechnica et Informatica Journal* , Vol.13 (2), pp.18-31, April-June.2013, DOI: 10.2478/aei-2013-0025.
- 12) C.Nagarajan and M.Madheswaran - 'DSP Based Fuzzy Controller for Series Parallel Resonant converter'- Springer, *Frontiers of Electrical and Electronic Engineering*, Vol. 7(4), pp. 438-446, Dec.12. DOI 10.1007/s11460-012-0212-0.
- 13) C.Nagarajan and M.Madheswaran - 'Experimental Study and steady state stability analysis of CLL-T Series Parallel Resonant Converter with Fuzzy controller using State Space Analysis'- *Iranian Journal of Electrical & Electronic Engineering*, Vol.8 (3), pp.259-267, September 2012.
- 14) C.Nagarajan and M.Madheswaran, "Analysis and Simulation of LCL Series Resonant Full Bridge Converter Using PWM Technique with Load Independent Operation" has been presented in ICTES'08, a IEEE / IET International Conference organized by M.G.R.University, Chennai. Vol.no.1, pp.190-195, Dec.2007
- 15) Suganthi Mullainathan, Ramesh Natarajan, "An SPSS and CNN modelling based quality assessment using ceramic materials and membrane filtration techniques", *Revista Materia (Rio J.)* Vol. 30, 2025, DOI: <https://doi.org/10.1590/1517-7076-RMAT-2024-0721>
- 16) M Suganthi, N Ramesh, "Treatment of water using natural zeolite as membrane filter", *Journal of Environmental Protection and Ecology*, Volume 23, Issue 2, pp: 520-530,2022
- 17) *Improving Artificial Intelligence–Based Clinical Decision Support Systems (2025)*
- 18) Jiang, F., Jiang, Y., Zhi, H., Dong, Y., Li, H., Ma, S., Wang, Y., Dong, Q., Shen, H., & Wang, Y.
- 19) *Artificial Intelligence in Healthcare: Transforming the Practice of Medicine (2021)*



- 20) Juravle, G., Boudioni, M., & Bhui, K. Trust in AI-Based Clinical Decision Support Systems: A Systematic Review (2025)
- 21) Kundu, S., Elhalawani, H., Gichoya, J. W., & Kahn Jr, C. E. Artificial Intelligence-Based Clinical Decision Support Systems in Primary Care (2024)
- 22) Sharma, P., & Mehta, P. Clinical Decision Support System Using Data Mining Techniques (2024)
- 23) Kiu, C. C., & Publication Extension Team The Role of Artificial Intelligence in Clinical Decision Support Systems (2024)
- 24) Ahmed, Z., Mohamed, K., Zeeshan, S., & Dong, X. Artificial Intelligence in Healthcare Decision-Making: A Systematic Review (2024)
- 25) Topol, E. J. AI-Driven Clinical Decision Support Systems: Challenges and Future Directions (2024)
- 26) Anand, L., Maurya, M., Seetha, J., Nagaraju, D., Ravuri, A., & Vidhya, R. G. (2023, July). An intelligent approach to segment the liver cancer using Machine Learning Method. In 2023 4th international conference on electronics and sustainable communication systems (ICESC) (pp. 1488-1493). IEEE.
- 27) Rajendran, S., Sundarapandi, A. M. S., Krishnamurthy, A., & Thanarajan, T. (2022). An intelligent face recognition technology for iot-based smart city application using condition-cnn with foraging learning pso model. *International Journal of Pattern Recognition and Artificial Intelligence*, 36(14), 2256018.
- 28) Murugeswari, B., & Sujatha, R. (2014). Preservation of Privacy for Multiparty Computation System with Homomorphic Encryption. *International Journal of Emerging Technology and Advanced Engineering*, 4(3), 530-535.
- 29) Sugumar, R. (2025). Unified AI Framework for Predictive Data Engineering and Real Time Prescription and Billing Systems. *International Journal of Advanced Engineering Science and Information Technology (IAESIT)*, 8(5), 17261.
- 30) Samrat, B., Thomas, P. K., Kumar, S., Benila, A., Bhardwaj, R., & Vigenesh, M. (2024, December). Industrial informatics in optimizing software-defined vehicles for logistics. In 2024 IEEE 2nd International Conference on Innovations in High Speed Communication and Signal Processing (IHCSP) (pp. 1-9). IEEE.
- 31) Soundappan, S. J. (2024). AI-driven customer intelligence in enterprise lakehouse systems Sentiment Mining Governance-Aware Analytics and Real-Time Data Synchronization. *International Journal of Advanced Engineering Science and Information Technology*.
- 32) Rajasekar, M. (2024). AI-Powered Cyber-Secure Federated Learning on AWS for Next-Generation Digital Banking Analytics. *International Journal of Advanced Research in Computer Science & Technology (IJARCST)*, 7(3).
- 33) Deivendran, P., Babu, P. S., Malathi, G., Anbazhagan, K., & Kumar, R. S. (2023). Emotion Recognition for Challenged People Facial Appearance in Social using Neural Network. arXiv preprint arXiv:2305.06842.
- 34) Sugumar, R., & Murugeswari, B. (2016). An Efficient MChord based Authentication for Vehicular Ad-Hoc Networks.
- 35) Pandey, V. K., Mishra, S., Rengarajan, A., Savita, & Roomi, M. M. (2024, March). Enhancing Weather Forecasting with Machine Learning Techniques. In *International Conference on Renewable Power* (pp. 147-156). Singapore: Springer Nature Singapore.
- 36) Mathew, A., & Alex, H. (2025). Federated Learning for Secure Genomic Research: Privacy-Preserving AI Solutions for Precision Medicine. *Science and Technology: Developments and Applications Vol. 9*, 36-43.
- 37) Selvi, G. V., Anbarasan, A. B., Murthy, B. A., & Prabavathy, S. (2023). An Application Oriented Integrated Unequal Clustering Algorithm for Wireless Sensor Network. In *Underwater Vehicle Control and Communication Systems Based on Machine Learning Techniques* (pp. 140-154). CRC Press.
- 38) Soundappan, S. J. (2025). Next Generation AI Enabled Holistic Cognitive Platform for Secure Cloud Network Intelligence Enterprise Systems and Digital Trust Optimization. *International Journal of Computer Technology and Electronics Communication*, 8(5), 11534-11542.
- 39) Rajasekar, M. (2024). Real-Time Predictive DevOps Intelligence for Risk-Aware Digital Business Processes in Cloud and SAP Ecosystems. *International Journal of Advanced Research in Computer Science & Technology (IJARCST)*, 7(4), 10713-10718.
- 40) Jagadeesh, S., & Sugumar, R. (2017). A comparative study on artificial bee colony with modified ABC algorithm. *European Journal of Applied Sciences*, 9(5), 243-248.
- 41) Murugeswari, B., Sarukesi, K., & Jayakumar, C. (2010, March). An efficient method for knowledge hiding through database extension. In 2010 International Conference on Recent Trends in Information, Telecommunication and Computing (pp. 342-344). IEEE.
- 42) Reddy, K. V. V. K., & Vimal, V. R. (2024, July). A novel approach on improved segmentation and classification of remote sensing images using AlexNet compared over linear discriminant analysis with improved accuracy. In 2024 Second International Conference on Advances in Information Technology (ICAIT) (Vol. 1, pp. 1-6). IEEE.



- 43) Gowthami, D., & Vigenesh, M. (2024). Distributed and Lightweight Intrusion Detection for IoT: A Lightweight Pyramidal U-Net With Tri-Level Dual Inception-Based Framework. In *The Convergence of Self-Sustaining Systems With AI and IoT* (pp. 154-173). IGI Global Scientific Publishing.
- 44) Anand, P. V., & Anand, L. (2023, December). An Enhanced Breast Cancer Diagnosis using RESNET50. In *2023 International Conference on Innovative Computing, Intelligent Communication and Smart Electrical Systems (ICSES)* (pp. 1-5). IEEE.
- 45) Mathew, A. (2022). Leveraging Big Data Analytics to Power AI and ML (Machine Learning) Automation. *Educational Research (IJMCR)*, 4(5), 131-134.
- 46) Dhinakaran, D. (2022). Joe Prathap P. M, Selvaraj D, Arul Kumar D and Murugeswari B," Mining Privacy-Preserving Association Rules based on Parallel Processing in Cloud Computing,". *International Journal of Engineering Trends and Technology*, 70(3), 284-294.
- 47) Poornima, G., & Anand, L. (2024, April). Effective Machine Learning Methods for the Detection of Pulmonary Carcinoma. In *2024 Ninth International Conference on Science Technology Engineering and Mathematics (ICONSTEM)* (pp. 1-7). IEEE.
- 48) Rengarajan, A., Jayakumar, C., & Sugumar, R. (2012). Optimization Of Recent Attacks Using Internet Protocol. *National Journal of System and Information Technology*, 5(1), 8.
- 49) Mathew, A., & Romasco, L. (2024). Forensic Investigation of Artificial Intelligence Systems. *Research Updates in Mathematics and Computer Science Vol. 4*, 154-164.
- 50) Vekariya, V., Kumar, S., & Rengarajan, A. (2024). A distinctive and smart agricultural knowledge-based framework using ontology. In *Sustainability in Digital Transformation Era: Driving Innovative & Growth* (pp. 207-213). CRC Press.
- 51) Soundappan, S. J. (2020). Big data analytics in healthcare: Applications for pandemic forecasting. *International Journal of Advanced Research in Computer Science & Technology*, 3.
- 52) Sugumar, R. (2024). AI-Augmented Quality Engineering for Performance Optimization and Test Orchestration in Distributed Systems. *International Journal of Science, Research and Technology*, 7(5), 12835-12846.
- 53) Soundappan, S. J., & Sugumar, R. (2016). Optimal knowledge extraction technique based on hybridisation of improved artificial bee colony algorithm and cuckoo search algorithm. *International Journal of Business Intelligence and Data Mining*, 11(4), 338-356.
- 54) Mathew, A. (2025). Ahead of the breach: Predictive threat intelligence in aviation inspired by Scattered Spider attacks. *Multidisciplinary International Journal of Research and Development (MIJRD)*, 4(6), 54-58.
- 55) Soundappan, S. J. (2021). DataOps: Orchestrating Reliable ML Data Pipelines. *International Journal of Research and Applied Innovations*, 4(4), 5533-5537.
- 56) Garg, V. K., Soundappan, S. J., & Kaur, E. M. (2020). Enhancement in intrusion detection system for WLAN using genetic algorithms. *South Asian Research Journal of Engineering and Technology*, 2(6), 62-64.
- 57) Anand, L., Tyagi, R., & Mehta, V. (2024, January). Food recognition using deep learning for recipe and restaurant recommendation. In *Proceedings of Eighth International Conference on Information System Design and Intelligent Applications* (pp. 269-279). Singapore: Springer Nature Singapore.
- 58) Kumar, A., & Anand, L. (2025). A Novel EEG-Based Deep Learning Framework for Enhancing Communication in Locked-In Syndrome Using P300 Speller and Attention Mechanisms. *KSII Transactions on Internet and Information Systems (TIIS)*, 19(11), 3841-3855.
- 59) Soundappan, S. J. (2022). AI-Based Fault Detection and Isolation for Reliability in Modern Power Systems. *International Journal of Research Publications in Engineering, Technology and Management (IRPETM)*, 5(4), 7106-7110.
- 60) Chandra, S., Rengarajan, A., Sahoo, G. S., & Sharma⁴, S. (2024, October). Identifying Neuronal Damage and Plasticity by Analyzing Changes in Diffusion Tensor. In *Proceedings of the 5th International Conference on Data Science, Machine Learning and Applications; Volume 2: ICDSMLA 2023, 15-16 December, Hyderabad, India (Vol. 2, p. 433)*. Springer Nature.